

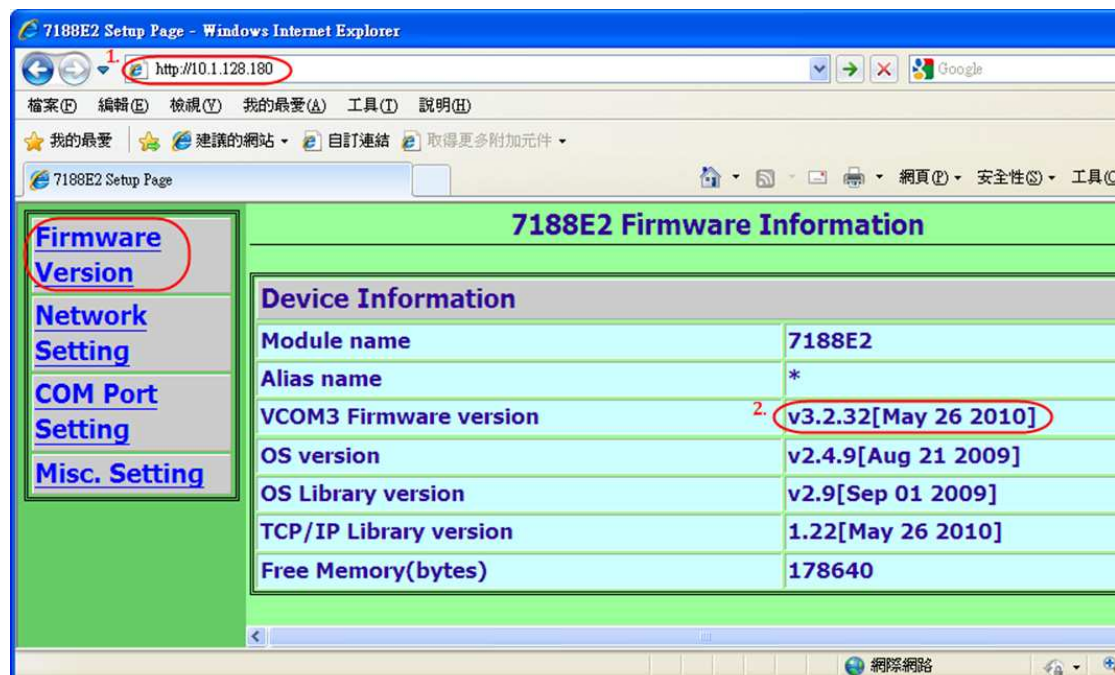
How to set the “Pair Connection” function for I-7188E series module

(Apply to I-7188E1, I-7188E2, I-7188E3, I-7188E4, I-7188E5 and I-7188E8 module.)

In this pair connection document, we use I-7188E2 module as example to introduce pair connection setting.
And the following steps show how to set I-7188E2 pair connection function.

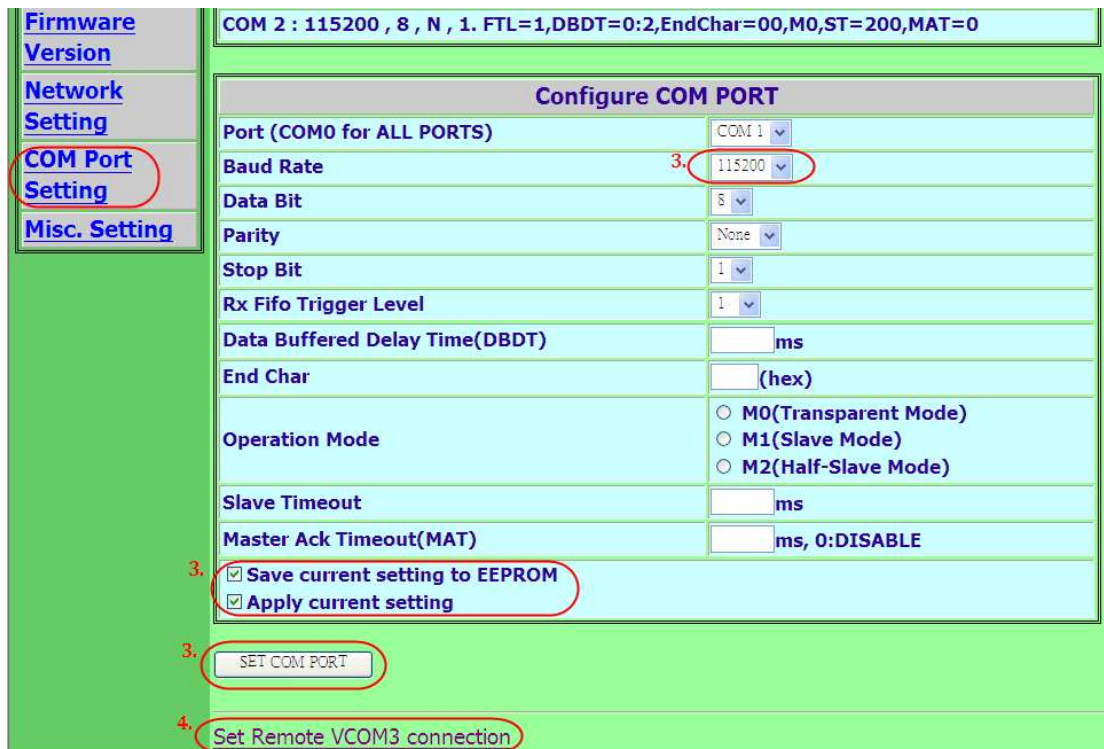
Step1. Connect to the web page of your client I-7188E2.

Step2. Check your firmware version is later than v3.2.32[May 26 2010].



Step3. Setup the “Baud Rate” and click “Save current setting to EEPROM”, “Apply current setting” then click “SET COM PORT” button.

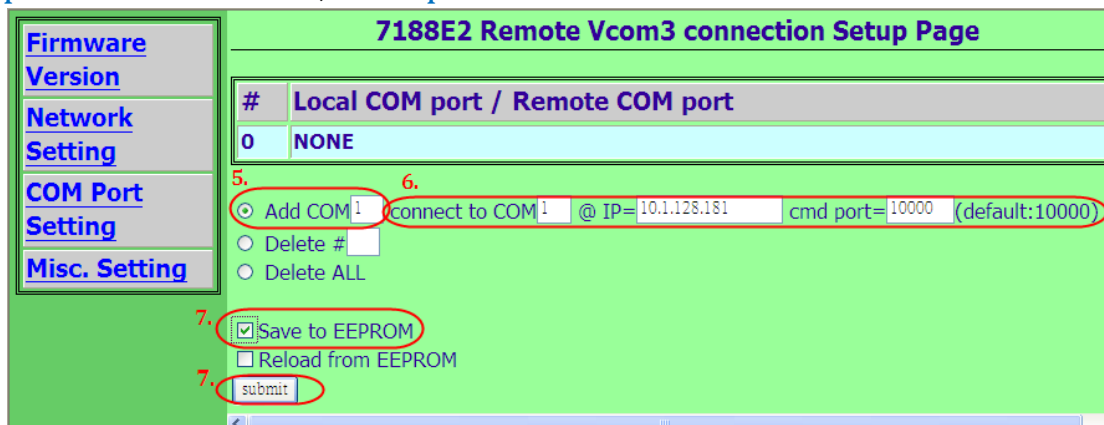
Step4. Click “Set Remote VCOM3 connection”.



Step5. Select “Add COM” and type in the “COM” of the client I-7188E2 which you want to use.

Step6. Type in the “connect to COM”, “IP”, “cmd port” of the server I-7188E4.

For example, we want to use COM1 of client I-7188E2 (IP : 10.1.128.180) to connect the COM1 of server I-7188E4(IP : 10.1.128.181), then we set “Add COM =1”, “connect to COM =1”, “cmd port =10.1.128.181”, “cmd port=10000” .



Step7. Click the “Save to EEPROM” and click “submit” button.

Step8. Reboot your I-7188E2(client) and then setting is complete.