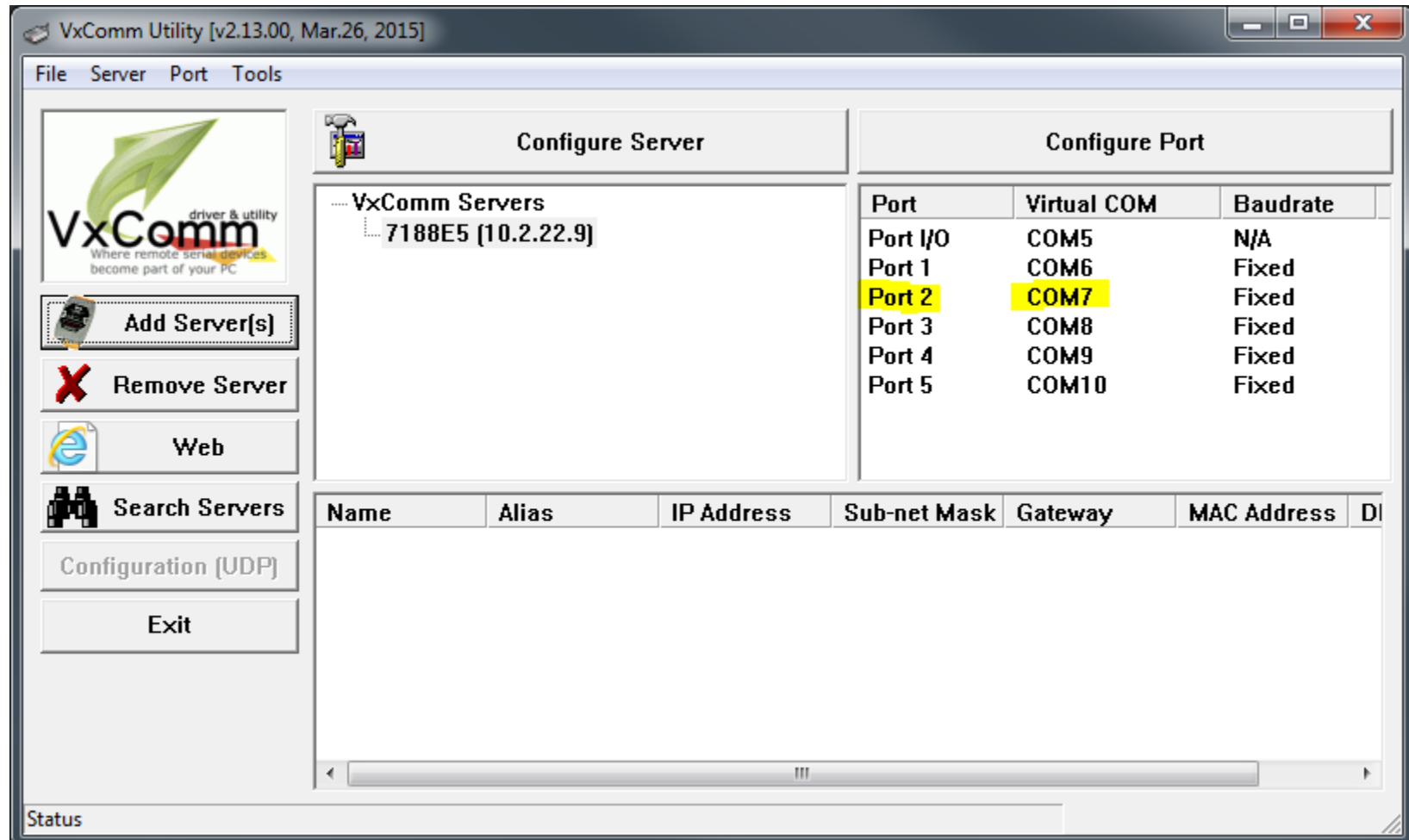
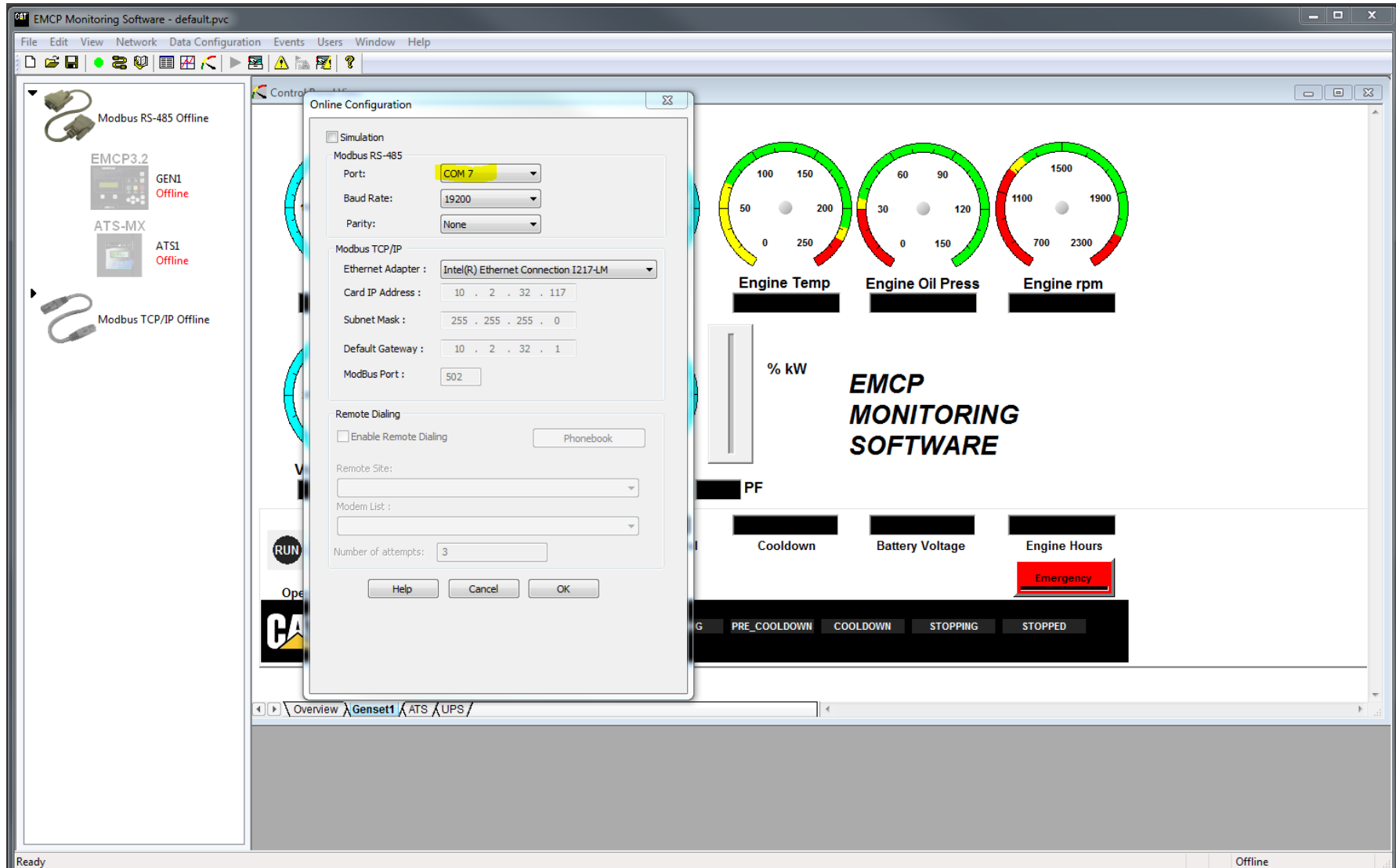


COM Port 2 of the 7188EX Maps to Virtual COM Port 7 in this picture.
Your mapping will likely differ.





Under 'Network' Online Configuration – Set your COM Port # based on what you have mapped to 7188EX Port 2





Device Properties – Set the Appropriate Slave Addresses for each Device

The screenshot shows the EMCP Monitoring Software interface. A 'Device Properties' dialog box is open, displaying the following information:

- Device Name:
- Device Type: EMCP3.2
- Network Interface: Modbus RS-485 Modbus TCP/IP
- Slave Address:
- IP Address: 0 . 0 . 0 . 0

The background shows a control panel with various gauges for Current (C), Engine Temp, Engine Oil Press, and Engine rpm, along with a power meter and engine control buttons.

The screenshot shows the EMCP Monitoring Software interface for an ATS (Automatic Transfer Switch) configuration. A 'Device Properties' dialog box is open, displaying the following information:

- Device Name:
- Device Type: ATS-MIX
- Network Interface: Modbus RS-485 Modbus TCP/IP
- Slave Address:
- IP Address: 0 . 0 . 0 . 0

The background shows the ATS control panel with sections for S1 and S2, including voltage (V_AB, V_BC, V_CA) and frequency gauges. A 'General Information' table and a 'GO TO (click hyperlink)...' menu are also visible.

General Information	
ATS Mode	
S1 Availability	
Time S1 Available	
S1#Phases	
S1 Position	
Total S1 Fails	
S1 Transfer Inhibit Sw	
S2 Availability	
S2#Phases	
S2 Position	
S2 Transfer Inhibit Sw	
Time S2 Available	
Total S2 Fails	
Days Powered Up	

GO TO (click hyperlink)...

- Settings
- Configuration
- Exerciser
- More Status
- Timer

After Configuration is complete – Press ‘Go Online’
Both devices should now show “Online: Good”

