



www.icpdas.com

(03)597-3366

High Quality Data Acquisition and Embedded Control Products

How to Check the Software License

for

InduSoft Web Studio

by

ICPDAS CO., LTD

Index Page

1. Checking a HardKey for Development or Runtime Version on PC.....	3
1.1 Checking Hardkey Licenses for InduSoft Web Studio	3
1.2 Checking the Current License	3
2. Checking a SoftKey License for CEView on W-8x36/W-8x39	6
2.1 Checking a License (Locally).....	6
2.2 Checking a License (Remotely).....	9

1. Checking a HardKey for Development or Runtime Version on PC

This section explains how to check Hardkey licenses (it need buy.) for IWS (run in Win NT/2000/XP).

1.1 Checking Hardkey Licenses for InduSoft Web Studio

To check the Hardkey of IWS licenses, use the following steps:


1. Install InduSoft Web Studio on your computer.
2. Connect the Hardkey to the parallel port (*LPT1*) on the computer where you installed IWS.

Caution: Use caution when installing or removing a Hardkey from your computer's parallel port. We *strongly* recommend that you turn off the computer and disconnect it from the power supply before installing or removing the Hardkey.

3. Run *InduSoft Web Studio*.

1.2 Checking the Current License

Please check the Hardkey and see whether it matches the ordered version. Please perform the following procedure to check the status of your current IWS license:

1. Close all InduSoft Web Studio development and runtime modules.
2. Ensure the Hardkey is connected to the parallel port (LPT1) on the computer where you installed IWS.
3. Execute the *Register* module by selecting Start → Programs → InduSoft Web Studio →  Register.
4. When the "*Protection Manager*" dialog is displayed (see figure 1-1), click (*enable*) the Hardkey radio button in the *Protection Type* section and click the Check button.

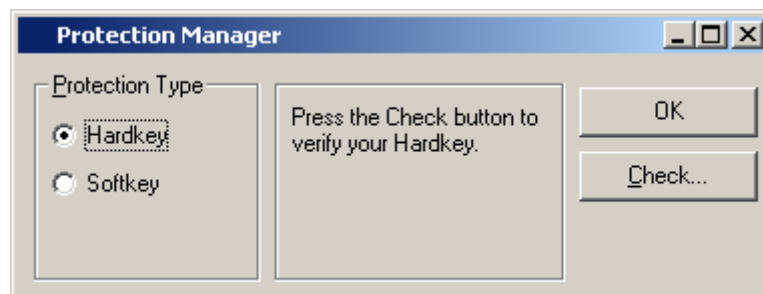


Figure 1-1

- If a valid Hardkey *is not* connected to the computer's parallel port (LPT1), the following error message will be displayed:

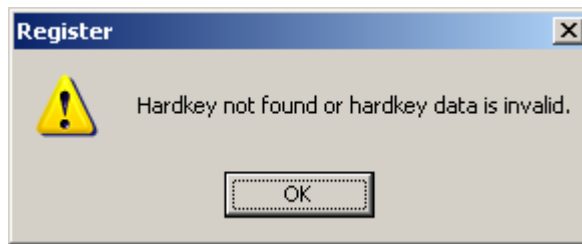


Figure 1-2

- If a valid Hardkey *is* connected to the computer's parallel port (LPT1), the *Register* module opens the "Hardkey Settings" dialog box (see the following figure 1-3), which displays the current license settings recorded on the Hardkey.

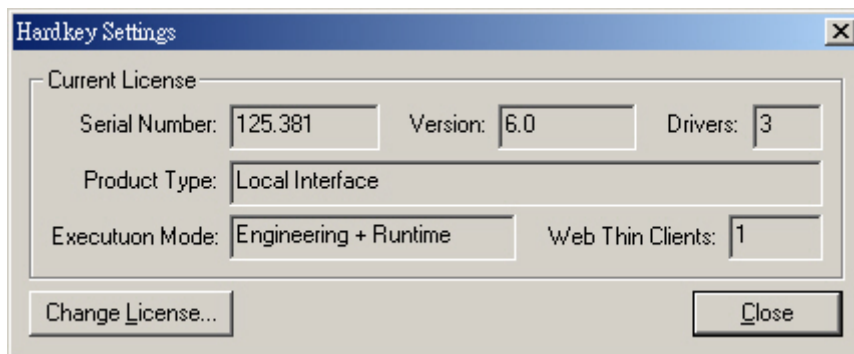


Figure 1-3

The "Hardkey Settings" dialog contains the following fields:

- **Serial Number:** If a valid Hardkey *is* connected to the computer's parallel port (LPT1), the *Register* module opens the "Hardkey Settings" dialog box (see the following figure 1-3), which displays the current license settings recorded on the Hardkey.
- **Product Type:** Specifies which features and restrictions are enabled for the application (such as maximum number of tags supported, maximum number of drivers running simultaneously, and so on). Consult the following Table 1-1 about which Product Types are available and which features are enabled for each type.

Table 1-1


Product Type	Execution Mode	Product Name of ICPDAS	Tags
Advanced Server	Engineering + Runtime	InduSoft-NT512000D	512,000.
Advanced Server	Runtime Only	InduSoft-NT512000R	512,000.
Control Room	Engineering + Runtime	InduSoft-NT64000D	64,000.
Control Room	Runtime Only	InduSoft-NT64000R	64,000.
Operator Workstation	Engineering + Runtime	InduSoft-NT4000D	4,000.

Operator Workstation	Runtime Only	InduSoft-NT4000R	4,000.
Local Interface	Engineering + Runtime	InduSoft-NT1500D	1,500.
Local Interface	Runtime Only	InduSoft-NT1500R	1,500.
CEView Standard	Engineering Only	InduSoft-CE1500D	1,500.
NTView PRO	Engineering + Runtime	InduSoft-NT300D	300.
NTView PRO	Runtime Only	InduSoft-NT300R	300.
CEView Lite Plus	Engineering Only	InduSoft-CE300D	300.
Lite Interface	Runtime Only	InduSoft-NT150R	150

- **Execution Mode:** Specifies the following three options
 - **Engineering Only:** Configures and runs the application for testing during development only. You cannot use this license as a long-term, run-time license.
 - **Runtime Only:** Runs the application for unlimited time. You cannot use this license to develop or modify the application.
 - **Engineering + Runtime:** Configures, modifies, and runs the application for an unlimited time.
- **Version:** Specifies the product version it supports.
- **Drivers:** Specifies the maximum number of drivers running simultaneously.
- **Web Thin Clients:** Specifies how many Web Thin Clients are supported. You can connect one or more Web Thin Clients to the server simultaneously (for an additional charge), but the license installed on the server must support these additional Web Thin Clients.

Options for adding Web Thin Clients are as follows:


- **Server for InduSoft Web Studio (WinNT/2000/XP):** Connects 0 (No Web Thin Clients), 1, 2, 4, 8, 16, 32, 64, 128, or 256 Web Thin Clients to the server simultaneously.
- **Server for CEView (WinCE):** Connects 0 (No Web Thin Clients), 1, 2, 4, or 8 Web Thin Clients to the server simultaneously.

 **Note:** If your the Hardkey Settings information are incorrect according to your product order, please send a screenshot of the Hardkey Settings dialog to service@icpdas.com.

2. Checking a SoftKey License for CEView on W-8x36/W-8x39

There are two ways to check a CEView (InduSoft runtime version on Windows CE) license on your W-8x36/W-8x39 embedded controller:


- **Locally:** Using the *Remote Agent* (CEServer.exe) from the W-8x36/W-8x39 embedded controller as the interface.
- **Remotely:** Using InduSoft Web Studio to check the license in the W-8x36/W-8x39 embedded controller.

 **Note:** The W-8x36 and W-8x39 embedded controllers are InduSoft licenses loaded already.

2.1 Checking a License (Locally)

To check an existing *CEView* SoftKey license (locally) on the W-8x36/W-8x39 embedded controller, use the following procedure:

1. Run the *Remote Agent* program (**CESERVER.EXE**) from the path **\\CompactFlash\InduSoft\CEServerV4.3** in the W-8x36/W-8x39 embedded controller.

 **Note:** If the file isn't found in the W-8x36/W-8x39 embedded controller, please download the **Runtime InduSoft v6.1 SP2 for W8x3x/W8x4x** file from the ICPDAS web site:
http://www.icpdas.com/products/Software/InduSoft/download_iws61.htm .

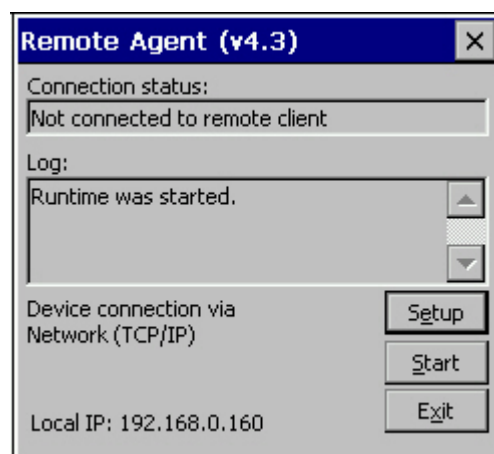


Figure 2-1

2. From the *Remote Agent* dialog, click the **Setup** button to open the *Setup* dialog (see following Figure 2-2).

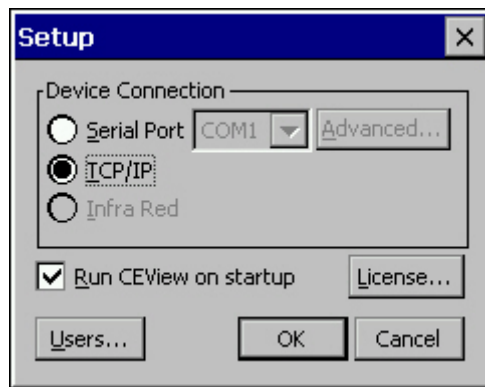


Figure 2-2

3. On the *Setup* dialog, click the **License** button to open the *License* dialog (as follows).

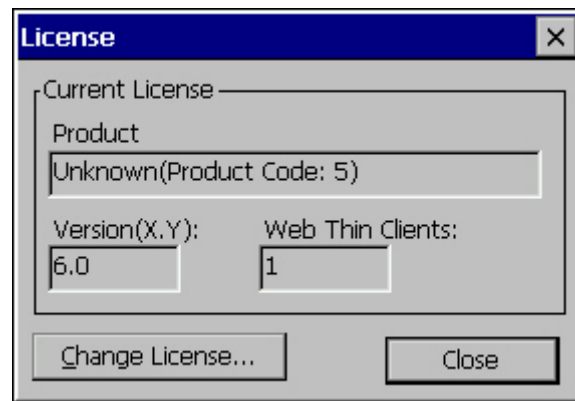


Figure 2-3

The “License” dialog contains the following fields:

- **Product** : Specifies which features and restrictions are enabled for application (such as the maximum number of tags supported, maximum number of drivers running simultaneously, and so on). Consult the following Table 2-1 about which Product Types are available and which features are enabled for each type.


Table 2-1

Product Type	Product field	Product Name of ICPDAS	Tags
CEView Lite Plus	Unknown(Product Code: 5)	InduSoft-CE300R	300.
CEView Standard	CEView	InduSoft-CE1500R	1,500.

- **Version**: Specifies the product version it supports.
- **Web Thin Clients**: Specifies how many Web Thin Clients are supported. You can connect one or more Web Thin Clients to the server simultaneously (for an additional charge), but the license installed on the server must support these additional Web Thin Clients.

Options for adding Web Thin Clients are as follows:

– **Server for CEView (WinCE):** Connects 0 (No Web Thin Clients), 1, 2, 4, or 8 Web Thin Clients to the server simultaneously.

 **Note:** If the License dialog information is incorrect according to your product order, please send a screenshot of the License dialog by the \CompactFlash\ICPDAS\Tools\ captce.exe tools to service@icpdas.com.

If the License dialog displays the following Figure 2-4, you need to reinstall the Softkey license on the W-8x36/W-8x39 embedded controller. Please refer to section 10.3 of the Getting Started manual.

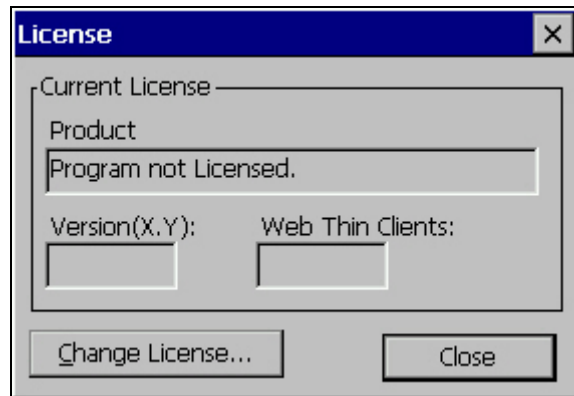


Figure 2-4

2.2 Checking a License (Remotely)

To check an existing *CEView* SoftKey license (remotely) in the W-8x36/W-8x39 embedded controller, use the following procedure:

1. Execute the first three steps described in the previous section.
2. In the *Setup* dialog, specify the Device Connection type by clicking (*enabling*) the Serial Port or TCP/IP radio button. (If you enable the Serial Port, you must also select the COM2 port from the combo-box list). Click OK to close the dialog box.

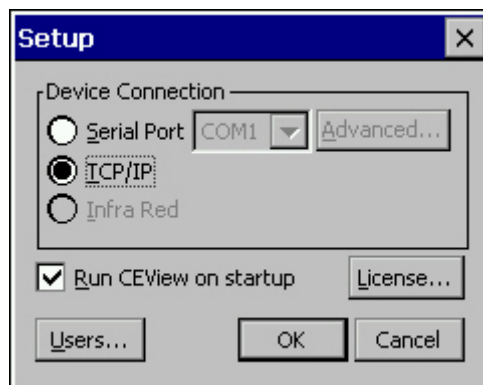


Figure 2-5

3. Run InduSoft Web Studio on the WinNT/2000/XP station and connect this station to the WinCE device using either a serial or TCP/IP link.
4. From the IWS main menu bar, select Project → Execution Environment to open the *Execution Environment* dialog box (as shown in the following figure).

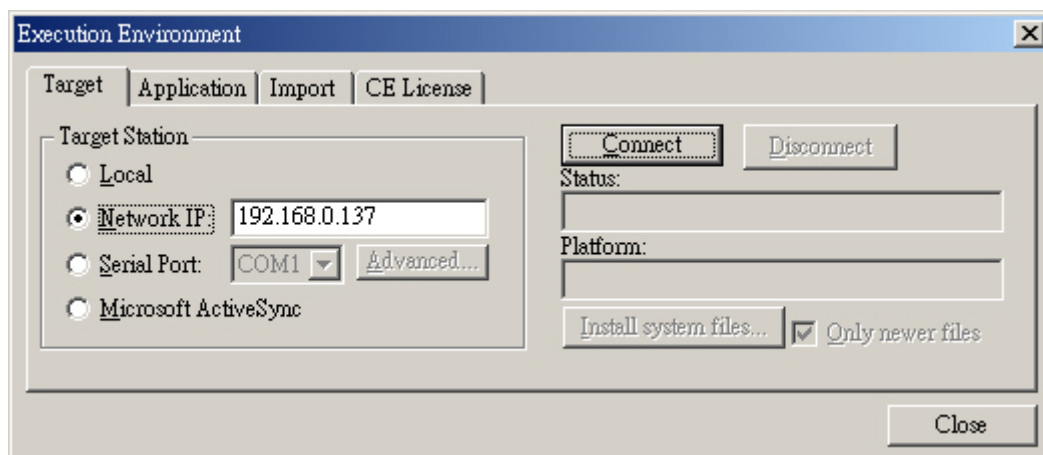



Figure 2-6

5. Specify a target station by clicking one of the following radio buttons in the *Target Station*:
 - Local
 - Network IP and type the IP address into the field provided

- Serial Port and select a port from the combo-box list provided
6. When the Connect button becomes active, click the button to connect to the W-8x36/W-8x39 embedded controller on which the *Remote Agent* is running. (If you select Network IP, you must also enter the IP address in the text box provided.)

 **Tip:** TCP/IP links provide better communication performance than Serial links.

The Status field must display the following message:

Connected to CEView <CEView Version>

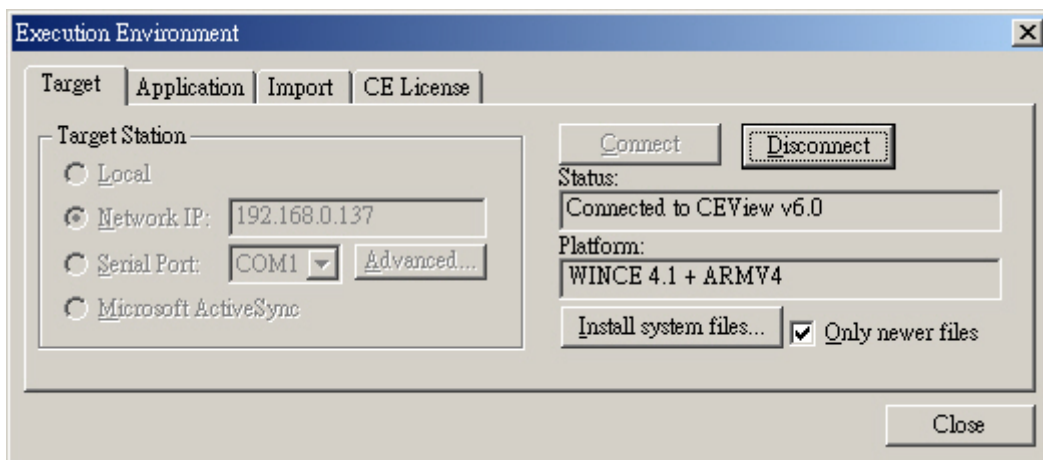


Figure 2-7

7. Select the *CE License* tab to see which license settings are currently installed on your W-8x36/W-8x39 embedded controller.

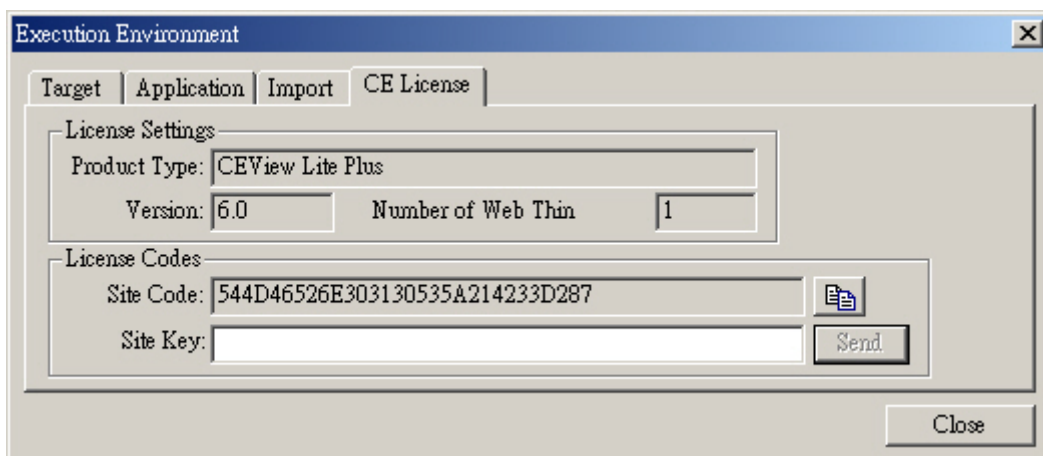


Figure 2-8

The “CE License” tab contains the following fields:

- **Product Type:** Specifies which features and restrictions are enabled for application (such as the maximum number of tags supported, maximum number of drivers running simultaneously,

and so on). Consult the following Table 2-2 about which Product Types are available and which features are enabled for each type.


Table 2-2

Product Type	Product Type field	Product Name of ICPDAS	Tags
CEView Lite Plus	CEView Lite Plus	InduSoft-CE300R	300.
CEView Standard	CEView Standard	InduSoft-CE1500R	1,500.

- **Version:** Specifies the product version it supports.
- **Web Thin Clients:** Specifies how many Web Thin Clients are supported. You can connect one or more Web Thin Clients to the server simultaneously (for an additional charge), but the license installed on the server must support these additional Web Thin Clients.

Options for adding Web Thin Clients are as follows:

- **Server for CEView (WinCE):** Connects 0 (No Web Thin Clients), 1, 2, 4, or 8 Web Thin Clients to the server simultaneously.

 **Note:** If the “CE License” tab information is incorrect according of your product order, please send a screenshot of the CE License tab to service@icpdas.com.

If the CE License tab displays the following Figure 2-9, you need to reinstall the Softkey license on the W-8x36/W-8x39 embedded controller. Please refer to section 10.3 of the Getting Started manual.

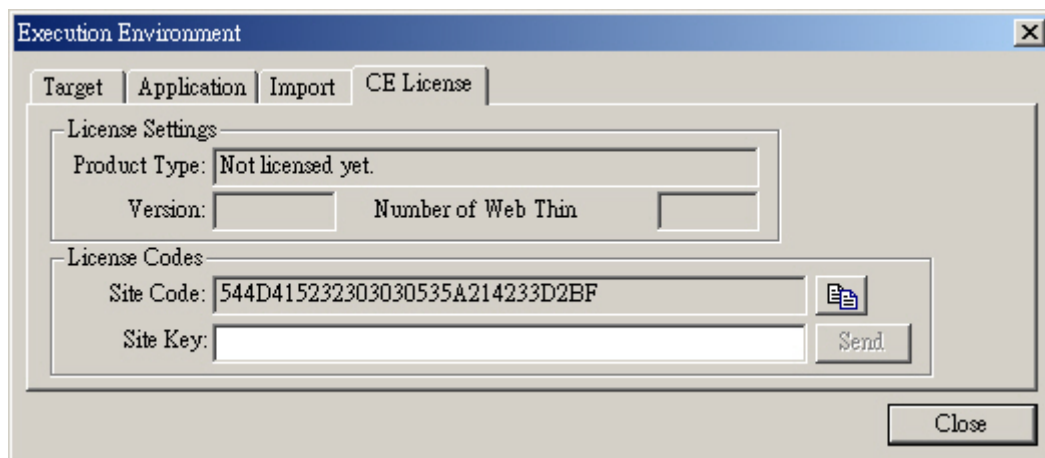


Figure 2-9