

WISE-5800-MTCP

User-defined I/O & Data Logger Module

Quick Start Guide

Thank you for purchasing WISE-5800-MTCP – the Intelligent Data Logger PAC controller for remote monitoring and control application. This Quick Start Guide will provide you with minimum information to get started with WISE-5800-MTCP. It is intended for use only as a quick reference. For more detailed information and procedures, please refer to the full user manual on the CD included in this package.

What's In the Box?

In addition to this guide, the package includes the following items:



WISE-5800-MTCP
Series Module



Utility CD



Software
card



2G microSD
(CA-0910)



RS-232 cable
(1C016)



**GSM Antenna
Screw Driver**
(ANT-421-02)
Only for WISE-5801

Technical Support

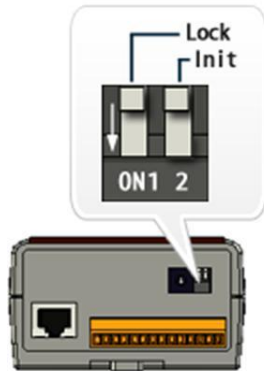
- **WISE-5800-MTCP User Manual**

CD:\WISE-5800-MTCP\document\User Manual\

http://ftp.icpdas.com/pub/cd/wise_cd/wise-5800/document/user manual/

- **WISE-5800-MTCP Website**

https://www.icpdas-usa.com/wise_5800_mtcp.html



1

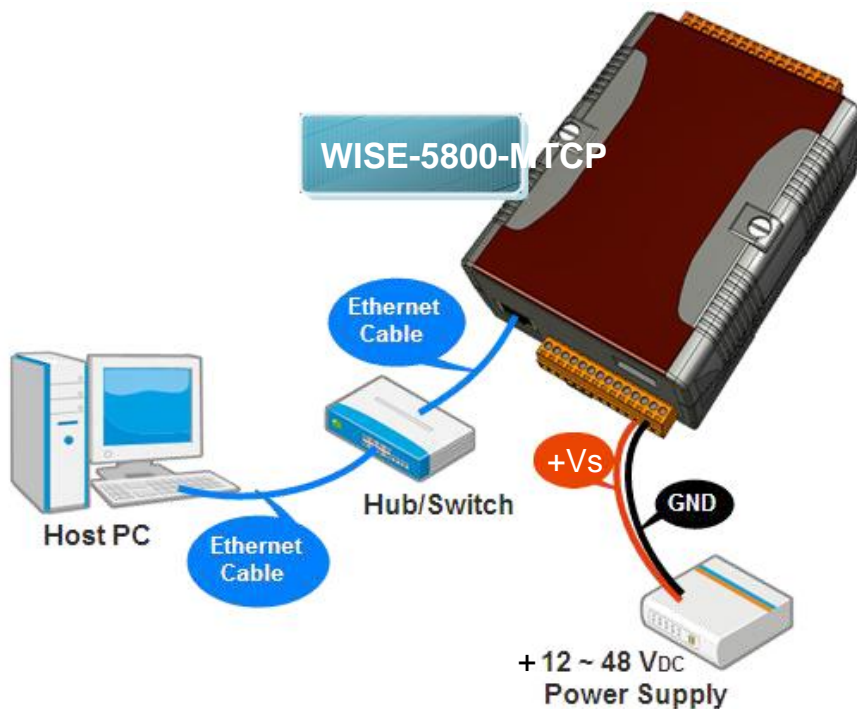
Configuring Boot Mode

Make sure the “Lock” switch placed in the “OFF” position, and the “Init” switch placed in the “OFF” position.

2

Connecting to PC, Network and Power

The WISE-5800-MTCP is equipped with an RJ-45 Ethernet port for connection to an Ethernet hub/switch and PC. You can also link directly the WISE-5800-MTCP to PC with an Ethernet cable.



3. Installing the MiniOS7 Utility

Step 1: Get the MiniOS7 Utility



The MiniOS7 Utility can be obtained from companion CD or our FTP site:

<CD:\Tools\MiniOS7 Utility>

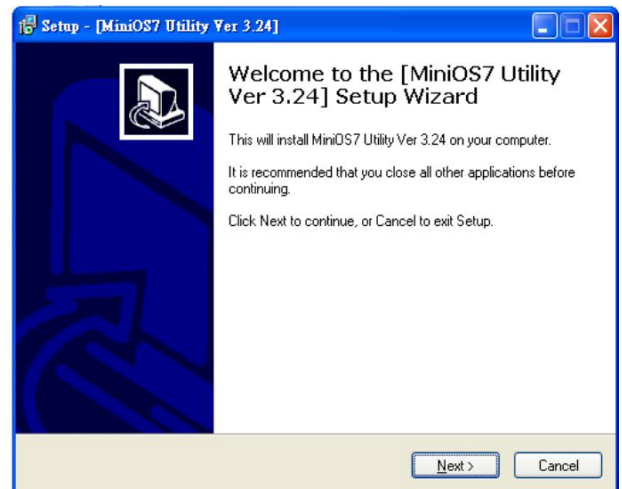
ftp://ftp.icpdas.com/pub/cd/8000cd/napdos/minios7/utility/minios7_utility/

Please download version v3.2.4 or later.

Step 2: Follow the prompts to complete the installation



MiniOS7 Utility Ver 3.24



After the installation has been completed, there will be a new short-cut for MiniOS7 Utility on the desktop.

4 ----- Using MiniOS7 Utility to Assign a New IP

The WISE-5800-MTCP is an Ethernet device, which comes with a default IP address, therefore, you must first assign a new IP address to the WISE-5800-MTCP.

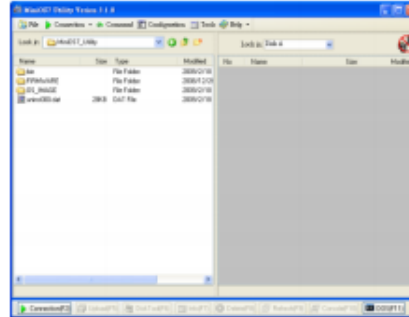
Item	Default
IP Address	192.168.255.1
Subnet Mask	255.255.0.0
Gateway	192.168.0.1

Step 1: Run the MiniOS7 Utility



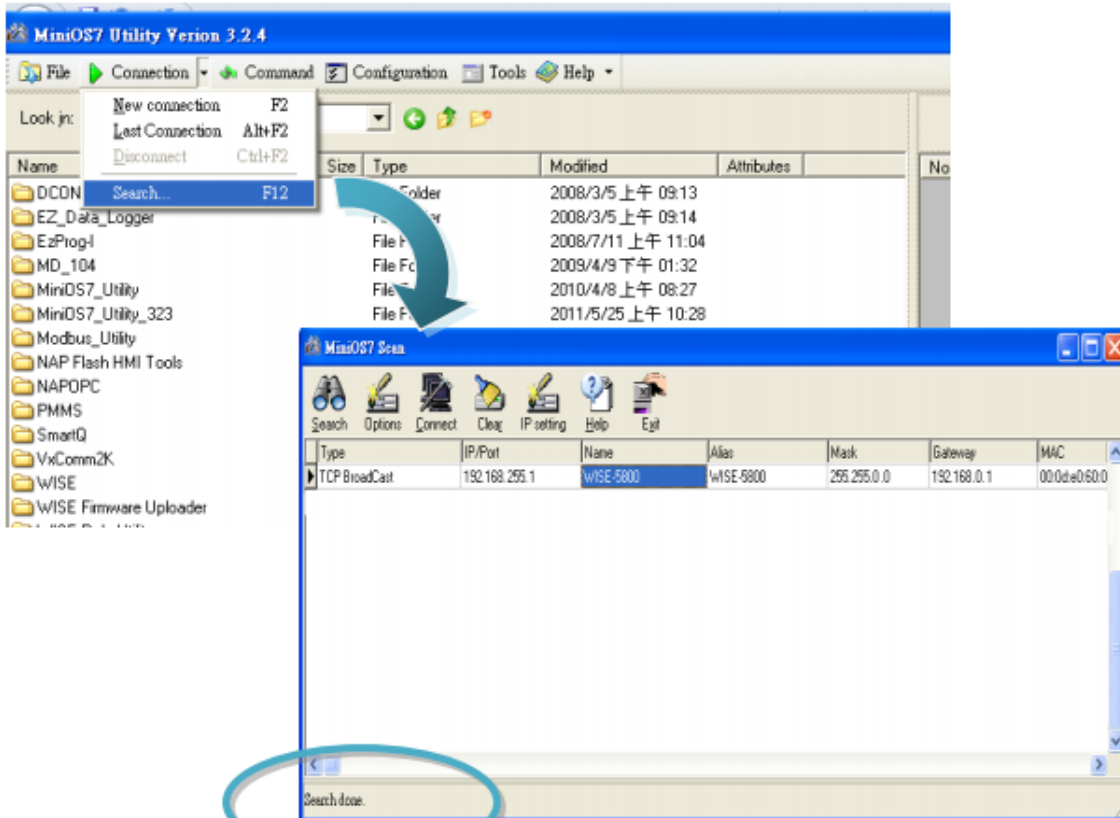
MiniOS7 Utility Ver 3.24

Double-click the MiniOS7 Utility shortcut on your desktop.



Step 2: Press "F12" or choose "Search" from the "Connection" menu

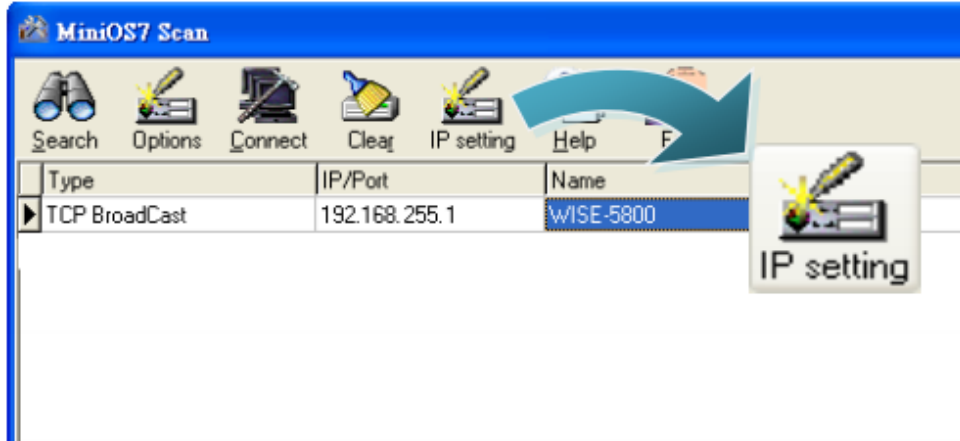
After pressing F12 or choosing "Search" from "Connection" menu, the MiniOS7 Scan dialog will appear, that will display a list of all the MiniOS7 modules on your network.



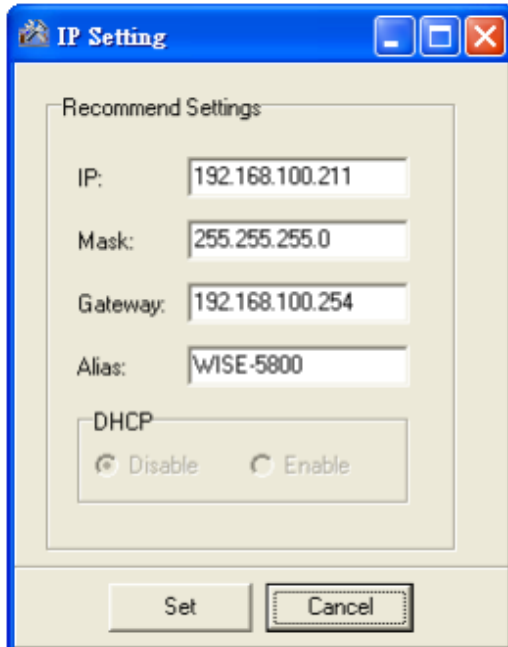
See the status tip, waiting for the search to be done.

Step 3: Choose the module name and then choose "IP setting" from the toolbar

Choose the module name for fields in the list, and then choose IP setting from the toolbar.

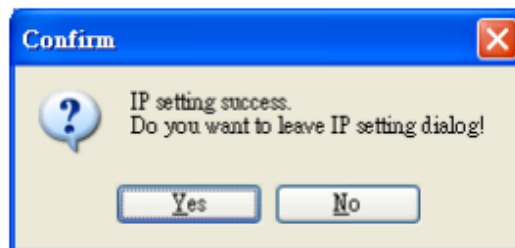


Step 4: Assign a new IP address and then choose "Set" button



Step 5: Choose "Yes" button & Reboot WISE-580x

After completing the settings, press the Yes button in the Confirm dialog box to exit the procedure, then reboot WISE-580x..



5

Go to WISE-5800-MTCP Web Site to edit Control Logic

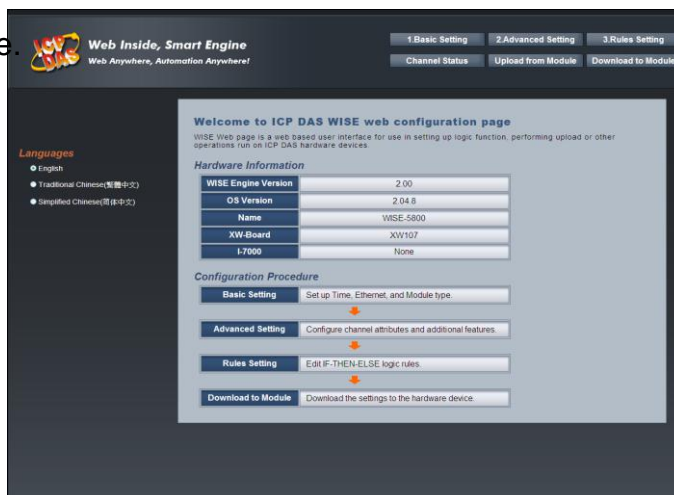
Please follow the steps below to implement IF-THEN-ELSE control logic on controllers:

Step 1: Open a browser, and type in the URL address of the WISE-5800-MTCP

Open a browser (**recommended using Internet Explorer, new version is better**). Type in the URL address of the WISE-5800-MTCP module in the address bar. Make sure the IP address is accurate.

Step2: Get on the WISE-5800-MTCP web site

Get on the WISE-5800-MTCP web site. Login with the default password "wise". Implement the control logic configuration in the order (Basic Setting → Advanced Setting → Rule Setting → Download to Module), then complete the IF-THEN-ELSE rule editing.



Step 3: For more detail information, please refer to WISE User Manual